

Our Solution

Increased Classroom Space The new facility will provide 31,434(+ Vocational Tech. classroom space) additional square feet of academic classrooms for the 7th – 12th grades, including new spaces for Math, Science, English and Social Studies, and this project would also provide new spaces for Art, Foreign Language, Computers and Technology, Business, Home Economics and Vocational Tech. The new facility will free up space in the existing school for the elementary programs to utilize, and to reduce class size in some grade levels.

Enhanced Security New entrances will provide controlled access for improved safety and security.

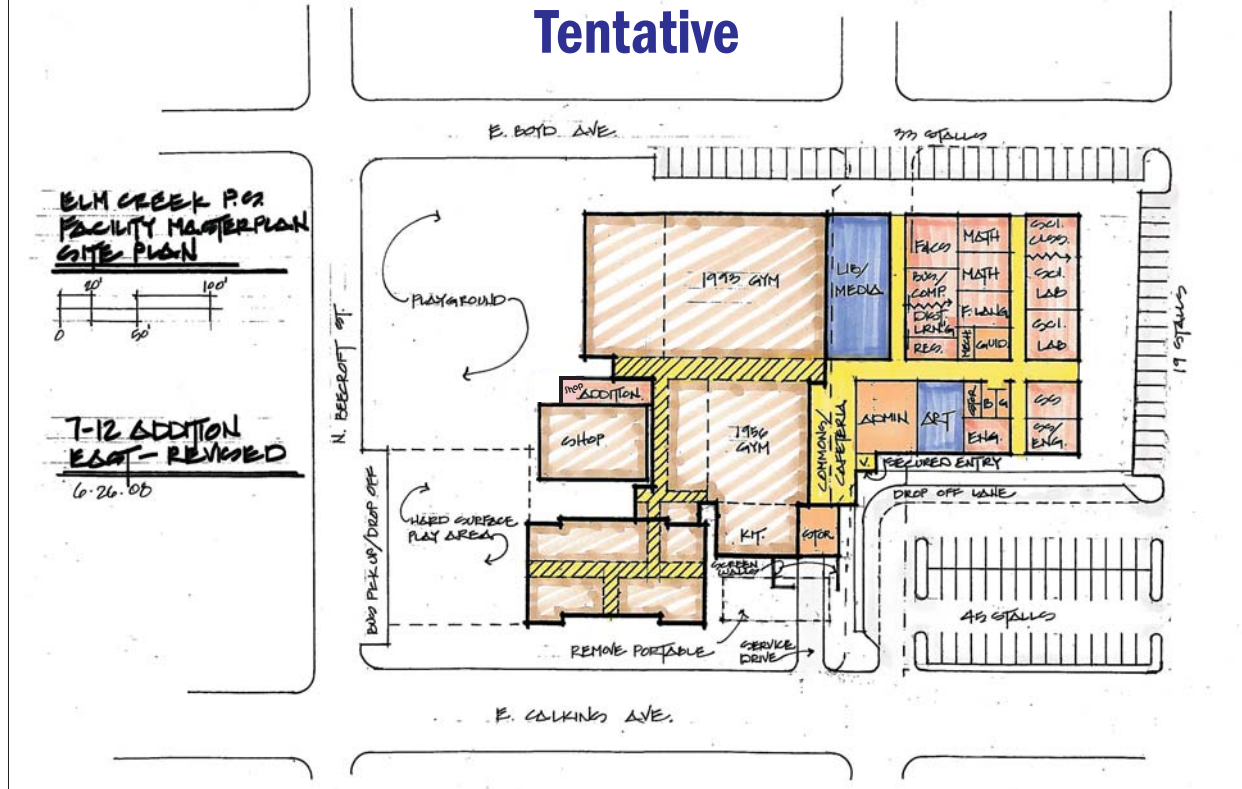
Accommodation for Specialized Services The new facility will provide accommodation for our specialized services to include; expanded office/ reception area, guidance, resource/ special services, nursing /sick facilities, and restrooms.

Separate Cafeteria/ Commons Space A cafeteria and commons space will help to preserve the old gym and allow it to be used more effectively for our theater program, P.E. classes, and recesses during inclement weather.

Expanded Library & Media A new library and media area with outside access will allow for these areas to be expanded and even utilized for after hour projects and study.

Fire Safety Measures This project includes the installation of fire code sprinklers in our current 3-story building and the peace of mind in knowing that our children are in a safer environment.

Elm Creek Public School with proposed East Addition Tentative



Financial Information

The Elm Creek School Board has approved the holding of a special bond election on September 9, 2008. The reason for the election being held on September 9 is that the school district would save in the range of \$200,000 to \$300,000 (because of bond interest) by having the election in September, instead of

Project Scope: \$5,700,000
Bond Size: \$5,750,000 (15-Year Amortization)

Track/Football	Valuation \$146,000,000
Levy:	2009 – 2.28 cents per \$100
	2010 – 2.52 cents per \$100
School/Gym	Valuation \$102,000,000
Levy:	2009 – 22.80 cents per \$100
	2010 – 17.74 cents per \$100
New Bonds	Valuation \$146,000,000
Levy:	2009 – 15.46 cents per \$100
	2010 – 19.57 cents per \$100
	2011 – 39.83 cents per \$100

Levy - cents per \$100 of Taxable Valuation

	Track/Football	New Bonds	Total	School/Gym	Total
2009	2.28 cents	15.46 cents	17.74 cents	22.80 cents	40.54cents
2010	2.52 cents	19.57 cents	22.09 cents	17.74 cents	39.83 cents
2011		39.33 cents	39.33 cents		39.33 cents
2012		39.27 cents	39.27 cents		39.27 cents
2013		39.47 cents	39.47 cents		39.47 cents
2014		39.27 cents	39.27 cents		39.27 cents
2015		39.35 cents	39.35 cents		39.35 cents
2016		39.36 cents	39.36 cents		39.36 cents
2017		39.31 cents	39.31 cents		39.31 cents
2018		39.17 cents	39.17 cents		39.17 cents
2019		39.31 cents	39.31 cents		39.31 cents
2020		39.35 cents	39.35 cents		39.35 cents
2021		39.31 cents	39.31 cents		39.31 cents
2022		39.19 cents	39.19 cents		39.19 cents
2023		39.34 cents	39.34 cents		39.34 cents

To calculate your tax increase: (Taxable valuation x .001546)

Taxable Value	Net Levy Increase	Yearly Increase	Monthly Increase
\$50,000	15.46 cents	\$77.30	\$6.44
\$75,000	15.46 cents	\$115.95	\$9.66
\$100,000	15.46 cents	\$154.60	\$12.88

Key Dates:

- August 22 – Mail in registration must be postmarked by or before August 22
- August 25 – Open House
- August 29 – Last day to register in person registration at the County Election Commissioners Office
- September 9 – Election Day

Who May Vote: District Residents who will be 18 years of age by November 4th, 2008 are eligible to register to vote in this election.

Absentee Ballot: Absentee ballots may be requested from the Election Commissioner in your county.

Where To Vote: The special election will be held at one polling place, which is the Elm Creek Village Hall, from 8:00 a.m. to 8:00 p.m.

Homestead Exemption will apply to this bond issue. Homeowners may apply for exemption at the County Assessor's office. State funding will replace local property taxes for those who qualify.

If you would like to publicly endorse this project with a yard sign or be listed in our endorsement ad prior to the election please let us know at abc@elmcreekabc.com or contact Becky Marshall at 856-4841 or Staci Worthing at 856-4414.



For more information about this project go to www.elmcreekabc.com

Paid for by:
A.B.C.
Advocates for Better Classroom
Penny Buettner, Treasurer
525 West Oak Avenue

It's time to begin

It's time to give our kids room to learn